

**Buckingham Creek**  
State Waterbody ID: MN04010201-B02

**Golf Course Pond**  
State Waterbody ID: MN69-1345-00

**Hog Island Inlet**  
State Waterbody ID: WI10008948

**Miller Creek**  
State Waterbody ID: MN04010201-512

**Year Last Reported:** 2022  
**Waterbody Condition:** Impaired (Issues Identified)

**Organization Name (ID):** Minnesota (MNPCA)

**What is this water used for?**

Use	Condition
Drinking Water	Condition Unknown
Aquatic Life	Impaired
Fish and Shellfish Consumption	Condition Unknown
Swimming and Boating	Impaired

**Identified Issues:**

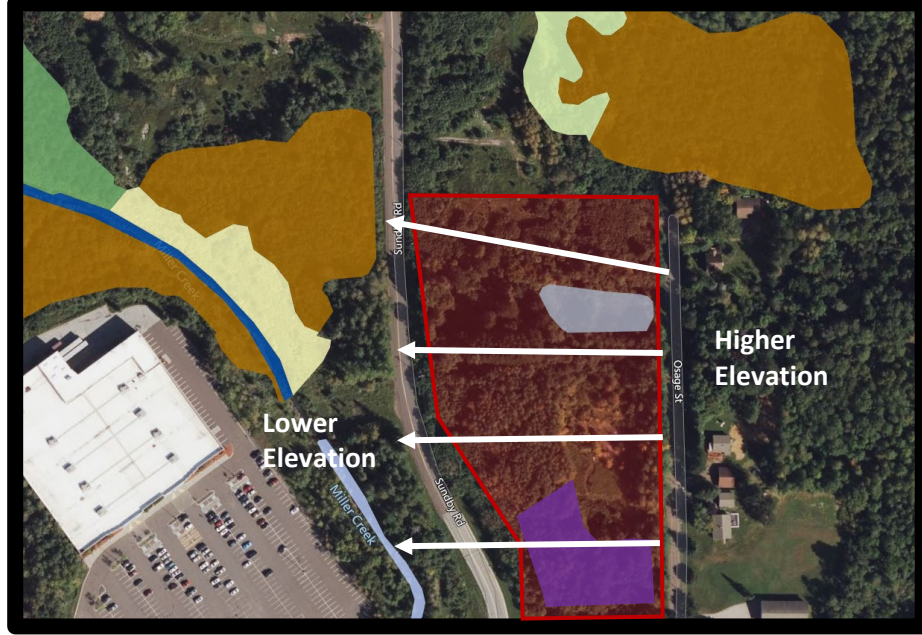
- Bacteria and Other Microbes
- Degraded Aquatic Life
- Salts
- Temperature

[View Waterbody Report](#) (opens new browser tab)

[View on Map](#)

**Newton Creek**  
State Waterbody ID: WI10008328

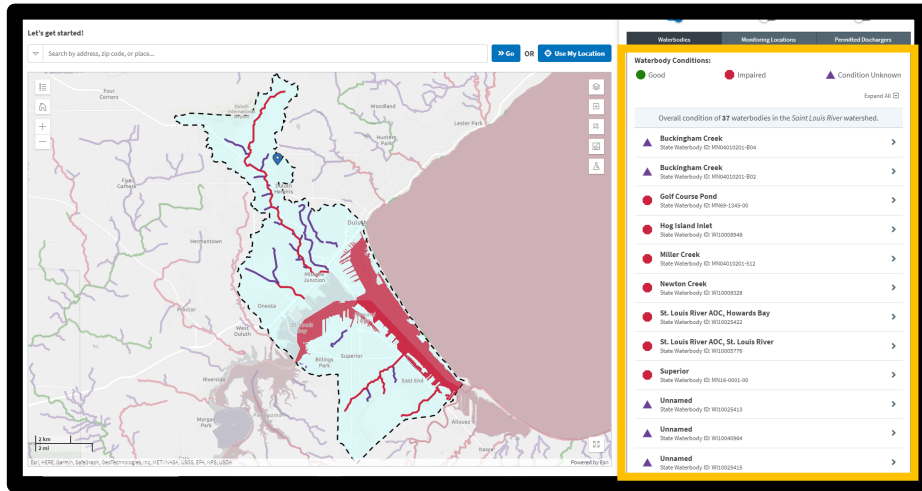
**St. Louis River AOC, Howards Bay**  
State Waterbody ID: WI10025422



**Hotel Site Location and Surrounding Wetlands**  
[www.mnatlas.org](http://www.mnatlas.org)

Project documents show the removal of 108 Trees  
 Proposed Parking Lot = 45, 545 sq. ft.  
 Proposed Building Size = 4 stories, 51'-6", Sq. Ft = unknown  
 \*Developer owns approximately 33 acres along Sundby Road. This project encompasses 6 acres.\*

**How's My Waterway?**  
 EPA Website  
**St. Louis River Watershed**  
[www.mywaterway.epa.gov](http://www.mywaterway.epa.gov)



- Surrounding Wetlands**
- Brown:** Shrub swamp wetland
  - Yellow:** Seasonally flooded basin wetland
  - Light Green:** Wet meadow wetland
  - Blue:** Shallow open water wetland
  - Purple:** Wetland indicated on developer drawings, location approx.
  - Red:** Proposed hotel and parking lot location

Minnesota's wetlands are legally protected. Wetlands are highly valued for their ecological contributions. They provide habitat for a variety of plants and animals *and improve water quality.*